



o.d.e.a.r.t.h.  
o.s.i.t.i.v.e.

# EarthPositive<sup>®</sup> Apparel

**TOUR MERCHANDISE  
WITH 90% LOWER  
CARBON FOOTPRINT**

✓ ORGANIC    ✓ FAIR TRADE    ✓ LOW CARBON



**“The UK music industry is a pivotal cultural and creative industry, nationally and internationally; it therefore has the power - and the responsibility, to be a proactive leader in taking and driving climate change action.”**

Julie's Bicycle [www.juliesbicycle.com](http://www.juliesbicycle.com)

**Music Acts on Climate Change.** The last thing that artists need is a lecture on climate change. Musicians and songwriters have been campaigning against and writing songs about poverty, injustice and global warming, for more than a decade. Long before ‘Live Earth’, environmentally aware rock bands and pop groups have been making themselves heard by performing at all sorts of benefit gigs and festivals to raise awareness of climate change.

More recently, musicians have been making their tours carbon neutral, others are releasing carbon neutral CDs or have been involved in tree planting schemes to offset their greenhouse gas emissions. Clearly, musicians have been searching for ways to take credible action on climate change.

# EarthPositive® Apparel

## Tour Merchandise with 90% Lower Carbon Footprint

EarthPositive® Apparel gives artists and musicians a blank canvas that already has positive environmental, social and ethical values, and which proves that **action on climate change can be real**, immediate, and come from the most unexpected places.

EarthPositive® Apparel is the Planet's first blank T-shirts and hooded sweatshirts brand manufactured from ‘low impact’ organic cotton and solely using **renewable green energy**. EarthPositive™ has reduced the carbon footprint of all its products by 90% while also managing to produce all the apparel without any detrimental effects to the Earth's fauna and flora or to its climate.

As physical record sales decline in favour of downloads, tour merchandise is becoming an increasingly important source of revenue. EarthPositive® Apparel gives the music industry a familiar product with which to demonstrate to their audience how action on climate change can become part of their every day wardrobe.

## UK Music Industry & Greenhouse Gas Emissions - The Facts

*Do you know?* The average CD results in just over 1.1kg CO<sub>2</sub>e being emitted into the atmosphere. The plastic jewel case, insert tray and booklet is one of the music industry's largest direct sources of GHG emissions. There were over 120 million CDs sold in the UK in 2007.

**The total greenhouse gas emission from the UK Music Market: Recorded and Live music is ~538,000 tonnes of CO<sub>2</sub>e per year.**

This is accumulated from: Audience Travel 231,000t, CDs 138,000t, Music Venues 125,000t, Generators 20,000t, Equipment Trucking 13,000t, Offices 7,000t and Tour Buses 5,000t CO<sub>2</sub>e.

At least an additional 416,000 tonnes of CO<sub>2</sub>e comes from international touring and industry air travel.

Source: Julie's Bicycle 'First Step' Report on UK Music Industry Greenhouse Gas Emissions 2007

**JULIE'S BICYCLE**   
TAKING THE HEAT OUT OF MUSIC

The UK Music Industry has begun searching for ways to reduce its carbon emissions in all its activities. Suggestions include switching to green electricity, greening festivals, recycled cardboard CD cases and fueling tour buses on biodiesel.

*Do you know?* Just 560,000 conventional tour T-shirts have a bigger carbon footprint than all the tour buses combined. This is because the carbon footprint of one conventional black tour T-shirt can be as much as 9kg CO<sub>2</sub>e and one conventional hooded sweatshirt can be over 40kg.

The 20 million tour T-shirts sold annually in the UK may have a total GHG of 180,000t CO<sub>2</sub>e – that is more than all the music venues, generators, trucking, tour buses and offices put together.

By switching to EarthPositive® Apparel, you have the opportunity to make the biggest IMMEDIATE contribution to reducing the music industry's carbon footprint.

**“It will be essential for the music industry to establish credibility. Leadership through practical demonstration of actions to reduce GHG emissions will be more lasting and meaningful than only artist-led campaigns.”**

Julie's Bicycle [www.juliesbicycle.com](http://www.juliesbicycle.com)

EarthPositive® is a practical and immediate solution for artists and the music industry to take immediate action to combat climate change and address environmental, social and ethical issues in a holistic way.

## EarthPositive® Apparel The Most Progressive Ethical Clothing on Earth

### Ethical, Environmental & Sustainability Specifications

For a full case study see appendix 1a

#### Environmental

EarthPositive® Apparel is made to demonstrate the highest possible environmental, social and ethical standards, in one of the world's most environmentally damaging industries, and to provide the music industry with a familiar product with which to promote awareness and take action on climate change. Now, the humble T-shirt, the most basic canvas for communicating a band name, identity, or political slogan, has become *the* environmental product.

#### Carbon Neutral

EarthPositive® Apparel is made in manufacturing facilities in India powered by wind turbines, from low-impact organic cotton, and is distributed through carbon neutral warehouses and offices in London that use only renewable green electricity.

#### 100% Organic

EarthPositive® is a 100% organic product, produced under the Global Organic Textile Standard (GOTS) and certified by Control Union and The Soil Association. EarthPositive® is GM-free.



#### Fair Trade Practices

Under the organic standard, farmers and agricultural workers are protected by stringent social criteria, total traceability across the entire supply chain, and also by the ban on the use of poisonous chemicals that can severely damage the health of farmers and their families. These standards also free poor farmers from third world debt to chemical companies on the 'pesticide treadmill'. See appendix 1b

#### Justice for Workers

To help tackle the social injustice often seen in manufacturing, commonly known as sweatshop labour, EarthPositive® goes further, making transparent the manufacturing supply chain through an independent audit by the Fair Wear Foundation, which promotes fair labour conditions in the clothing industry. See appendix 1c



#### Pick Your Cotton Carefully

We guarantee that we do not use cotton from Uzbekistan while the use of forced child labour is endemic. This follows the recommendations of the Environmental Justice Foundation's 'Clean Cotton Campaign'. The complete traceability of certified organic cotton allows us to make this guarantee.

#### Wind Powered

The primary energy source for EarthPositive® apparel is thirty massive wind turbines that turn wind power into clean renewable electricity.



#### What is 'Climate Neutral'?

Climate Neutral means our industrial greenhouse gas emissions have been reduced to pre-industrial levels through low-impact (low emission) organic agriculture and carbon neutral industrial manufacturing achieved by substituting electricity from fossil fuel power stations with clean renewable energy generated by wind turbines.

### Reduce your carbon footprint, combat climate change, protect the Planet

#### Look After Our Water

The processing of the dye effluent takes place in a controlled closed-loop purification system that uses treatment ponds, sand filtration and reverse osmosis to convert the wastewater into clean water.

#### Environmentally Friendly

EarthPositive® is certified by the Oeko-Tex 100 Standard, Class I. The Oeko-Tex Standard is a guarantee of the safety of textiles and dyestuffs to human health and to the environment. It also means we take more care in adopting environmentally friendly production methods throughout the manufacturing process.



#### Low Water Impact

It can take more than 20,000 litres of water to produce 1kg of cotton, equivalent to a single T-shirt and a pair of jeans. That's why we chose to work in a region that receives up to 95% of its water from the monsoon rain. This was an important consideration for us, as the monsoon rain reduces the need for large-scale irrigation projects normally associated with conventional cotton farming, which often deprive local villages of scarce water resources by draining lakes and rivers.

#### Transportation

EarthPositive® has 'No Airfreight' policy. We use containerized ocean shipping, thus the carbon footprint generated by transporting our apparel to Europe, Japan and the USA is negligible, more like a fingerprint, less than 1% of the total. We cannot solve the world's transportation and energy security issues, but we can ensure that our own methods do nothing to contribute to environmental damage, social injustice or climate change.


#### Carbon Labelling

EarthPositive® apparel has reduced the carbon footprint of a T-shirt by 90%. However, consumers require an independent verification process and a label to confirm the claims of individual companies. The Carbon Trust is trialling such a label with select pilot partners. EarthPositive® was granted the first such label for a textile product. The Carbon Trust's footprinting methodology is to become the single standard for greenhouse gas footprinting in the UK.




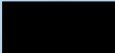
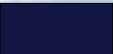
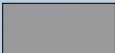


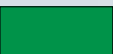
# EP01

## Men's EarthPositive® Organic Cotton T-shirt

<p><b>working with the Carbon Trust</b></p>  <p>650g CO2 per garment</p>	<p>The carbon footprint of this product is 650g. This is the total carbon dioxide (CO2) and other greenhouse gases emitted from the raw materials, production and transport to the UK</p>
	<p>This compares to the carbon footprint of an identical product manufactured without the use of renewable electricity which is 6.5kg per garment</p>
<p>We have committed to reduce this carbon footprint</p>	

100% certified organic cotton jersey 155g/m<sup>2</sup>

**S, M, L, XL, XXL**

	
WHITE	BLACK
	
NAVY BLUE	DARK GREY
	
BRIGHT BLUE	LIGHT GREY
	
LIGHT BLUE	YELLOW
	
LIGHT GREEN	RED
	
KELLY GREEN	DARK RED
	
MOSS GREEN	BROWN




Model wears size large

Model wears size medium

# EP02

## Women's EarthPositive® Organic Cotton T-shirt

<p><b>working with the Carbon Trust</b></p>  <p>500g CO2 per garment</p>	<p>The carbon footprint of this product is 500g. This is the total carbon dioxide (CO2) and other greenhouse gases emitted from the raw materials, production and transport to the UK</p>
	<p>This compares to the carbon footprint of an identical product manufactured without the use of renewable electricity which is 5.0kg per garment</p>
<p>We have committed to reduce this carbon footprint</p>	


100% certified organic cotton jersey 145g/m<sup>2</sup>

**XS, S, M, L, XL**

	
WHITE	BLACK
	
NAVY BLUE	DARK GREY
	
LIGHT BLUE	PINK
	
KELLY GREEN	RED
	
	BROWN

# EP61P

## Men's EarthPositive® Organic Cotton Hooded Pullover

<p><b>working with the Carbon Trust</b></p>  <p>2.8kg CO2 per garment</p>	<p>The carbon footprint of this product is 2.8kg. This is the total carbon dioxide (CO2) and other greenhouse gases emitted from the raw materials, production and transport to the UK</p>
<p>We have committed to reduce this carbon footprint</p>	<p>This compares to the carbon footprint of an identical product manufactured without the use of renewable electricity which is 28kg per garment</p>



100% certified organic cotton  
3-ply fleece 310g/m<sup>2</sup>

**S, M, L, XL**




BLACK

Model wears size medium

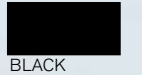
# EP62P

## Women's EarthPositive® Organic Cotton Hooded Pullover

<p><b>working with the Carbon Trust</b></p>  <p>2.2kg CO2 per garment</p>	<p>The carbon footprint of this product is 2.2kg. This is the total carbon dioxide (CO2) and other greenhouse gases emitted from the raw materials, production and transport to the UK</p>
<p>We have committed to reduce this carbon footprint</p>	<p>This compares to the carbon footprint of an identical product manufactured without the use of renewable electricity which is 20kg per garment</p>

100% certified organic cotton  
3-ply fleece 290g/m<sup>2</sup>

**XS, S, M, L**




BLACK

Model wears size medium

**EP62Z**

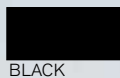
**Women's EarthPositive®  
Organic Cotton  
Hooded Zip-up**

<p><b>working with the Carbon Trust</b></p>  <p><b>2.4kg</b> per garment</p>	<p>The carbon footprint of this product is 2.4kg. This is the total carbon dioxide (CO2) and other greenhouse gases emitted from the raw materials, production and transport to the UK</p> <p>This compares to the carbon footprint of an identical product manufactured without the use of renewable electricity which is 26kg per garment</p>
<p>We have committed to reduce this carbon footprint</p>	



100% certified organic cotton  
3-ply fleece 290g/m<sup>2</sup>


**XS, S, M, L,**



Model wears size small

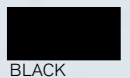
**EP61Z**

**Men's EarthPositive®  
Organic Cotton  
Hooded Zip-up**

<p><b>working with the Carbon Trust</b></p>  <p><b>3.0kg</b> per garment</p>	<p>The carbon footprint of this product is 3.0kg. This is the total carbon dioxide (CO2) and other greenhouse gases emitted from the raw materials, production and transport to the UK</p> <p>This compares to the carbon footprint of an identical product manufactured without the use of renewable electricity which is 34kg per garment</p>
<p>We have committed to reduce this carbon footprint</p>	

100% certified organic cotton  
3-ply fleece 310g/m<sup>2</sup>


**S, M, L, XL**



Model wears size medium

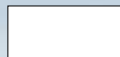
EP21

Men's EarthPositive®  
Organic Cotton  
Piqué Polo

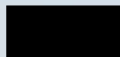
<p><b>working with the Carbon Trust</b></p>  <p>1.1kg CO2 per garment</p>	<p>The carbon footprint of this product is 1.1kg. This is the total carbon dioxide (CO2) and other greenhouse gases emitted from the raw materials, production and transport to the UK</p> <p>This compares to the carbon footprint of an identical product manufactured without the use of renewable electricity which is 11kg per garment</p>
<p>We have committed to reduce this carbon footprint</p>	

100% certified organic cotton  
piqué 180g/m<sup>2</sup>

S, M, L, XL, XXL



WHITE



BLACK



Model wears size medium

EarthPositive® are the Planet's first T-shirts, polos and hooded sweatshirts made solely using renewable *green* wind energy, from certified organic cotton.

EarthPositive® has achieved a 90% reduction in the total CO2 emissions of their blank apparel by using sustainable energy generated from wind.



*"The music industry is a pivotal cultural and creative industry, nationally and internationally; it therefore has the power – and the responsibility – to be a proactive leader in taking and driving climate change action"*

Quote from Julie's Bicycle 'First Step' Report on UK Music Industry Greenhouse Gas Emissions 2007 [www.juliesbicycle.com](http://www.juliesbicycle.com)

**JULIE'S BICYCLE**   
TAKING THE HEAT OUT OF MUSIC


# EarthPositive® Apparel

## Designed to reduce your carbon footprint

We embarked on an ambitious program that has now been shown to have reduced the carbon footprint of EarthPositive® Apparel by around 90%.

The carbon footprint is the total carbon dioxide (CO<sub>2</sub>) and other greenhouse gases emitted during the cultivation and harvesting, processing, production, packaging, transportation and warehousing in the UK.

We lowered our carbon footprint by a combination of product design, manufacturing efficiency, 'low impact' organic agriculture, substituting grid electricity with renewable wind power, and low water footprint. We do not use carbon offsets.

 <p><b>working with the Carbon Trust</b></p> <p>650g CO<sub>2</sub> per garment</p> <p>We have committed to reduce this carbon footprint</p>	<p>The carbon footprint of this product is 650g. This is the total carbon dioxide (CO<sub>2</sub>) and other greenhouse gases emitted from the raw materials, production and transport to the UK</p>
	<p>This compares to the carbon footprint of an identical product manufactured without the use of renewable electricity which is 6.5kg per garment</p>

The Carbon Label shown is a way of communicating the impact on the climate of making (or buying) a product, and also displaying a very clear commitment to carbon reduction.

The user can make a significant contribution to reducing the footprint by washing at low temperatures and line-drying.

### How does the carbon footprint of other promotional apparel compare with EarthPositive® Apparel?

Until other apparel brands publish the exact GHG emission values of their products, we must assume that the carbon footprint of a typical Men's T-shirt should be in the range of 6-9kg of CO<sub>2</sub>e, a Woman's T-shirt should be in the range of 5-8kg of CO<sub>2</sub>e, and a typical hooded sweatshirt should be in the range of 40-50kg of CO<sub>2</sub>e. There are many variables that affect the final value.

Conventionally farmed cotton has a greater footprint than organic cotton because of the use of petroleum-based chemicals. Industrial farming in developed countries is heavily mechanised, which further adds to the footprint.

Larger sizes or heavier weight T-shirts will have a correspondingly greater footprint, and this can be significant. A typical T-shirt might weigh just 200g, and have a CF of 9kg CO<sub>2</sub>e; and so the mass of GHG emitted into the atmosphere is almost forty five times greater than the mass of the T-shirt itself.

Basically, the more raw materials and processing needed, and the more greenhouse gases emitted to make a product, the higher its carbon footprint.

The values shown below represent the total Carbon Footprint as certified by the Carbon Trust. The 'Initial' value accounts for the use of conventional energy from the national grid. The 'Reduction' is achieved by using renewable green energy sources. There is no off-setting. [www.carbontrust.co.uk](http://www.carbontrust.co.uk) [www.carbon-label.co.uk](http://www.carbon-label.co.uk)

EP01 Men's T-shirt WHITE	S	M	L	XL	XXL
Initial Carbon Foot print [kg of CO <sub>2</sub> ]	5,760	5,950	6,490	6,920	7,590
Reduction [kg of CO <sub>2</sub> ]	-5,198	-5,370	-5,856	-6,242	-6,848
[%]	90.243	90.252	90.231	90.202	90.224
Final Carbon Foot print [kg of CO <sub>2</sub> ]	0,562	0,580	0,634	0,678	0,742

EP01 Men's T-shirt BLACK	S	M	L	XL	XXL
Initial Carbon Foot print [kg of CO <sub>2</sub> ]	5,930	6,120	6,670	7,120	7,810
Reduction [kg of CO <sub>2</sub> ]	-5,354	-5,526	-6,021	-6,425	-7,049
[%]	90.287	90.294	90.270	90.239	90.256
Final Carbon Foot print [kg of CO <sub>2</sub> ]	0,576	0,594	0,649	0,695	0,761

EP02 Women's T-shirt WHITE	XS	S	M	L	XL
Initial Carbon Foot print [kg of CO <sub>2</sub> ]	4,060	4,370	4,910	5,090	5,490
Reduction [kg of CO <sub>2</sub> ]	-3,662	-3,941	-4,432	-4,590	-4,956
[%]	90.197	90.183	90.265	90.177	90.273
Final Carbon Foot print [kg of CO <sub>2</sub> ]	0,398	0,429	0,478	0,500	0,534

EP02 Women's T-shirt BLACK	XS	S	M	L	XL
Initial Carbon Foot print [kg of CO <sub>2</sub> ]	4,180	4,500	5,050	5,240	5,650
Reduction [kg of CO <sub>2</sub> ]	-3,772	-4,060	-4,560	-4,727	-5,102
[%]	90.239	90.222	90.297	90.210	90.301
Final Carbon Foot print [kg of CO <sub>2</sub> ]	0,408	0,440	0,490	0,513	0,548

EP21 Polo shirt WHITE	S	M	L	XL	XXL
Initial Carbon Foot print [kg of CO <sub>2</sub> ]	10,486	11,422	12,039	12,619	13,011
Reduction [kg of CO <sub>2</sub> ]	-9,472	-10,319	-10,877	-11,401	-11,756
[%]	90.330	90.343	90.348	90.348	90.354
Final Carbon Foot print [kg of CO <sub>2</sub> ]	1,014	1,103	1,162	1,218	1,255

EP21 Polo shirt BLACK	S	M	L	XL	XXL
Initial Carbon Foot print [kg of CO <sub>2</sub> ]	10,788	11,750	12,385	12,981	13,385
Reduction [kg of CO <sub>2</sub> ]	-9,748	-10,619	-11,193	-11,732	-12,098
[%]	90.360	90.374	90.375	90.378	90.385
Final Carbon Foot print [kg of CO <sub>2</sub> ]	1,040	1,131	1,192	1,249	1,287

EP61P Men's Pullover Hoody	S	M	L	XL
Initial Carbon Foot print [kg of CO <sub>2</sub> ]	26,862	27,171	27,442	27,710
Reduction [kg of CO <sub>2</sub> ]	-24,138	-24,417	-24,661	-24,903
[%]	89.859	89.864	89.866	89.870
Final Carbon Foot print [kg of CO <sub>2</sub> ]	2,724	2,754	2,781	2,807

EP62P Women's Pullover Hoody	XS	S	M	L
Initial Carbon Foot print [kg of CO <sub>2</sub> ]	19,569	19,836	20,391	20,620
Reduction [kg of CO <sub>2</sub> ]	-17,551	-17,792	-18,308	-18,514
[%]	89.688	89.696	89.785	89.787
Final Carbon Foot print [kg of CO <sub>2</sub> ]	2,018	2,044	2,083	2,106



The values have been updated in April 2008 reflecting changes in the methodology as prescribed in PAS 2050.

## Label



### CLIMATE NEUTRAL

This EarthPositive T-shirt was manufactured solely using renewable green energy from wind and solar power.

Dieses EarthPositive T-Shirt wurde ausschliesslich mittels erneuerbarer Energie aus Wind- und Solarkraft hergestellt.

Questa EarthPositive T-Shirt è fabricata usando solamente energia rinnovabile proveniente dal vento e dal sole.

Ce EarthPositive Tee-shirt était fabriqué exclusivement à base d'énergie éolienne et solaire.

このEarthPositiveTシャツは、風力と太陽エネルギーから再生可能な環境エネルギーのみを使用し製造されています。

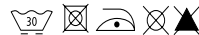
[www.EarthPositiveOnline.com](http://www.EarthPositiveOnline.com)

Produced under Global Organic Textile Standard from Indian cotton



Certified by the Soil Association Licence No. DK19090

**100% ORGANIC COTTON**  
**COTONE ORGANICO**  
**BIOBAUMWOLLE**  
**BIO COTON**  
**オーガニック・コットン**



SAVE THE CLIMATE  
 WASH COOL - LINE DRY

RETTET DAS KLIMA  
 KALT WASCHEN  
 AUF DER LEINE TROCKNEN

SALVA IL CLIMA  
 LAVARE A FREDDO  
 ASCIUGARE ALL'ARIA APERTA

SAUVE LE CLIMAT  
 LEVER FROID  
 SÉCHER À L'AIR LIBRE

環境のため  
 洗濯機の節水、節電  
 を心掛けましょう。

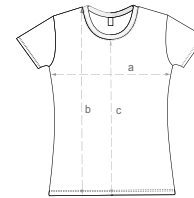
CODE: EP01  
 RN 117366

## Colours



Please note: the colours shown above are for guidance only and, because of paper printers' or computer monitors' inconsistencies, will differ from actual products.

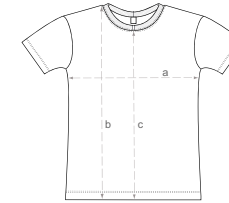
## EarthPositive® Product Range - April 2008



Women's T-shirt  
 Code: EP02  
 Single Jersey 145 g/m<sup>2</sup>

		Sizes:				
		XS	S	M	L	XL
a	16½	17½	18½	19½	20½	in.
	42	44.5	47	49.5	52	cm
b	24½	25½	25½	26	26	in.
	63	64	65	66	66	cm
c	20½	20½	21	21½	21½	in.
	52	53	53.5	54.5	54.5	cm

Colours:  
 Black Light Blue  
 White Navy Blue  
 Pink Kelly Green  
 Red Dark Grey  
 Brown



Men's T-shirt  
 Code: EP01  
 Single Jersey 155 g/m<sup>2</sup>

		Sizes:				
		S	M	L	XL	XXL
a	19½	20½	22	23½	25½	in.
	50	53	56	60	64	cm
b	26½	28	28½	28½	30	in.
	68	71	73	73	76	cm
c	23	24	24½	24½	25½	in.
	58.5	61	62.5	62	64.5	cm

Colours:  
 Black Navy Blue  
 White Light Green  
 Yellow Kelly Green  
 Red Moss Green  
 Dark Red Light Grey  
 Light Blue Dark Grey  
 Bright Blue Brown



Men's Polo  
 Code: EP21  
 Piquè 180 g/m<sup>2</sup>

		Sizes:				
		S	M	L	XL	XXL
a	20½	21½	22½	24	25	in.
	52	55	58	61	63.5	cm
b	26½	27½	28½	29½	30	in.
	68	70	73	75	76	cm
c	24½	25	26	26½	27	in.
	61.5	63.5	66	67.5	68.5	cm

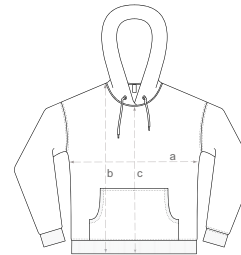
Colours:  
 Black  
 White

## Wash Cool - Save the Climate

EarthPositive® apparel can be washed at 40°C; however, we ask our consumers to consider the effects of domestic machine washing and tumble drying, time and time again, which may contribute up to 80% of CO2 emission by a conventional cotton garment in its lifecycle.

We label our garments SAVE THE CLIMATE WASH COOL LINE DRY in addition to standard wash care instructions.

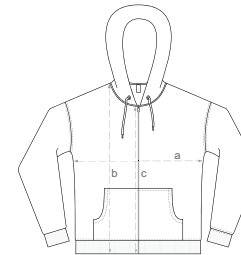
We also recommend eco-friendly detergents, which have minimal aquatic toxicity and will biodegrade quickly and completely.



Men's Hooded Pullover  
 Code: EP61P  
 3-ply Fleece 310 g/m<sup>2</sup>

		Sizes:			
		S	M	L	XL
a	22½	24½	25½	27½	in.
	57.5	61.5	65.5	69.5	cm
b	29½	30	31½	32	in.
	74.5	76.5	79.5	81.5	cm
c	26½	27	28	28½	in.
	66.5	68.5	71	73	cm

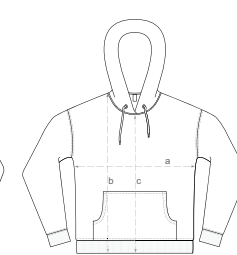
Colours:  
 Black



Men's Hooded Zip-up  
 Code: EP61Z  
 3-ply Fleece 310 g/m<sup>2</sup>

		Sizes:			
		S	M	L	XL
a	21½	22½	24½	25½	in.
	55	58	61.5	65	cm
b	28½	29½	30½	31½	in.
	72	74	77.5	79.5	cm
c	23½	24½	25½	26	in.
	60	62	64	66	cm

Colours:  
 Black



Women's Hooded Pullover  
 Code: EP62P  
 3-ply Fleece 290 g/m<sup>2</sup>

		Sizes:			
		XS	S	M	L
a	18	19	20	21½	in.
	46	48	51	54	cm
b	23½	24½	26½	27½	in.
	59	63	67	70	cm
c	20	21½	22½	23½	in.
	51	54	58	60	cm

Colours:  
 Black



Women's Hooded Zip-up  
 Code: EP62Z  
 3-ply Fleece 290 g/m<sup>2</sup>

		Sizes:			
		XS	S	M	L
a	17½	18½	19½	20½	in.
	44.5	47	49.5	52	cm
b	24½	25	26½	27½	in.
	61.5	63.5	67.5	70.5	cm
c	21	21½	23	24½	in.
	53.5	55.5	58.5	61.5	cm

Colours:  
 Black



**As the carbon footprint gets smaller, life gets greener.** Partnering with **EarthPositive®** Apparel helps reduce your carbon footprint by 90% compared to people who choose conventional merchandise. To save the Planet, we all have to evolve, ecologically. Partner with us to a cleaner, greener future.

